

# AMPARK Exit Verifier *One Tower that does it all*



**AMPARK Exit Control:** All you need for most Exit Lanes in Parking. Issues bar coded ticket, connects directly to existing LAN / WAN / WLAN infrastructure, has 4line LCD display, has Interlocks, offers suck-back/automatic reset and provides inputs for capacity control and traffic statistics. Can accommodate card reader, intercom, CCTV camera and more!

The Exit Control Tower (XCT) is designed to provide all the normal functions required in a typical parking exit lane where the payment is made at a central cashiering point and the patron is issued a ticket to exit in a specified time period (grace time). The XCT includes the following:

- \* Grace time verification
- \* Card or tag ID for monthly or frequent parkers
- \* Built-in Intercom for help
- \* LCD with instructions in up to two languages to users
- \* Control of all devices & activities in lane
- \* Lot Full count, traffic count, interlock and more

The XCT is designed for heavy duty operation. The two sections design allows technical service in the lower section and operator paper loading on the upper section. This front service design also allows locating the tower next to a wall or in tight curb locations in a garage.

The XCT can operate on-line or off-line for more flexibility. The date & time printed in barcode format in the original ticket or in the exit receipt, will be read by a powerful omnidirectional scanner in a user-friendly reading cavity. The system will allow a "grace time" that will be verified by the XCT before to open the gate.

A card reader can be built-in the front panel allowing regular/monthly parking customers to use the card. The XCT can also easily interface with the RFID tag (passive or active) or any other access control device. Anti pass-back and other features are all included in the standard system.

The XCT uses the XPIP control panel for all its operations and it is therefore fully compatible with all the other devices in the AMWATCH and AMPARK systems. Using the standard TCP/IP protocol, the XCT connects easily into existing or dedicated LAN infrastructure providing enormous flexibility in communication and control campus-wide.

Thanks to the TCP/IP communication compatibility it is also possible to do remote set-up and diagnostic, saving configuration and commissioning costs.

A four line, backlit display can provide instructions in up to two languages at every step. Voice instructions can also be added as an option. The XPIP control panel monitors every activity, provide all the interlocks, counts all traffic and works with the capacity control system to provide Lot Full sign control at the entry lane. Three different intercom options are available to meet the needs of all field conditions: conventional hardwired intercom, telephone based, intercom and voice over IP (VoIP) based intercom.

# AMPARK Exit Verifier *One Tower that does it all*

## All-in-One

Exit Verifier, Card Reader, Intercom, Lane Controller & more.

## Barcode Receipt

Scans Barcode Receipt issued at Central Cashier or at Autopay Cashier Unit, with Grace Period.

## TCP/IP w/On Line or Off Line

Connects to existing LAN cabling. Smart enough to make all local decisions.

## Bilingual Display

4 line backlit display shows instructions in two languages at every step.

## One Person Handling

Heavy duty, yet lightweight design allows one person to handle & install tower.

## Fits Tight Spaces

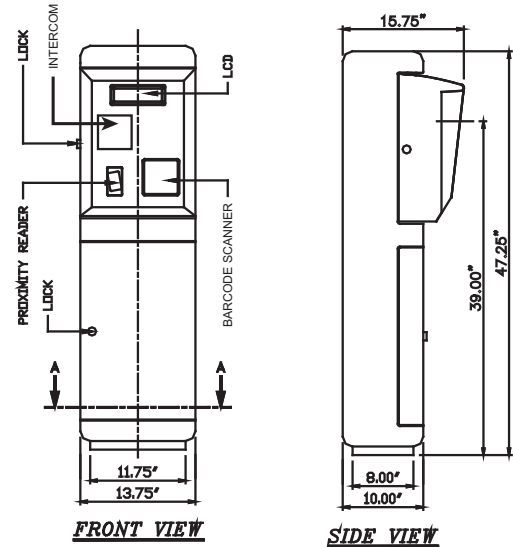
Two doors open in the front so tower needs only 15" curb depth for operation.

## 3 types of Intercom

- Conventional hardwired • Telephone Entry
- VoIP using LAN cabling

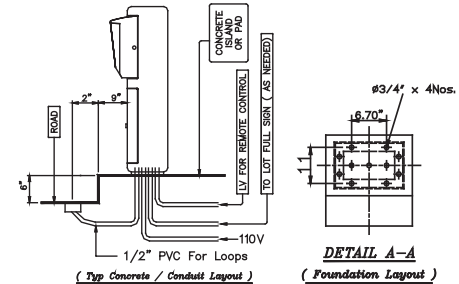
## Embedded CC Reader

Allows accepting payment for overdue tickets. Also can handle auto-pay applications.



**FRONT VIEW**

**SIDE VIEW**



**(Typ Concrete / Conduit Layout)**

**(Foundation Layout)**

## ORDERING INFO

### AUTOSCAN Exit Control Tower

- 540-XIP-SM000** : AUTOSCAN Metal Exit Verifier
- 540-XIP-SMI00** : AUTOSCAN Metal Exit Verifier with Built-in Intercom Option as mentioned below:
- \* **I** - Standard iPhone Intercom
  - \* **J** - Standard iPhone Intercom with VoIP Board
- 540-XIP-SM0R0** : AUTOSCAN Metal Exit Verifier Built-in Reader Option as mentioned below:
- \* **R** - Indala Flex Reader
  - \* **P** - HID Prox Point Reader
  - \* **Q** - iClass R10 Prox Reader
  - \* **M** - MiFare Indala Reader
  - \* **H** - Hotel Magstrip Reader
- 540-XIP-SM00V** : AUTOSCAN Metal Exit Verifier Built in CCTV Camera. Options as mentioned below:
- \* **V** - Video Camera
  - \* **P** - Voice Prompt
  - \* **Z** - Voice Prompt & Video Camera
- 540-XIP-SMIRV** : AUTOSCAN Metal Exit Verifier - including Entry Lane Controller with Built-in Intercom, Flex Proximity Reader and BNC Camera

## SPECIFICATIONS

### ELECTRICAL SPECIFICATIONS

120VAC, 60 Hz.  
 Power-fail and surge protected circuit recommended  
 Omni-directional Laser Scanner  
 LCD display - 4 lines, 20 characters per line,  
 9.22mm x 4.84 mm character, yellow backlit.

### MECHANICAL SPECIFICATIONS

13.75"X15.75"X47.25"  
 Standard Color - White  
 Front Panel - Stainless Steel  
 Housing - Metal re-enforced Fiberglass  
 Bottom Mounting Bracket: Galvanized Steel -Black  
 Top Door - Hinged, locked and sealed.  
 Bottom Door - Hinged, locked and sealed.

### ENVIRONMENTAL SPECIFICATIONS

Storage: 14F to 122F (-10°C to +50°C)  
 Transportation: 14F to 122F (-10°C to +50°C)  
 Operating: -14F to 122F (-10°C to +50°C)

### SHIPPING DETAILS

- Box 1 : Housing w/o top door assembly  
 52"X17"X14" - 60 lbs.
- Box 2 : Top door assembly  
 19.50"X16.75"X11" - 12 lbs.